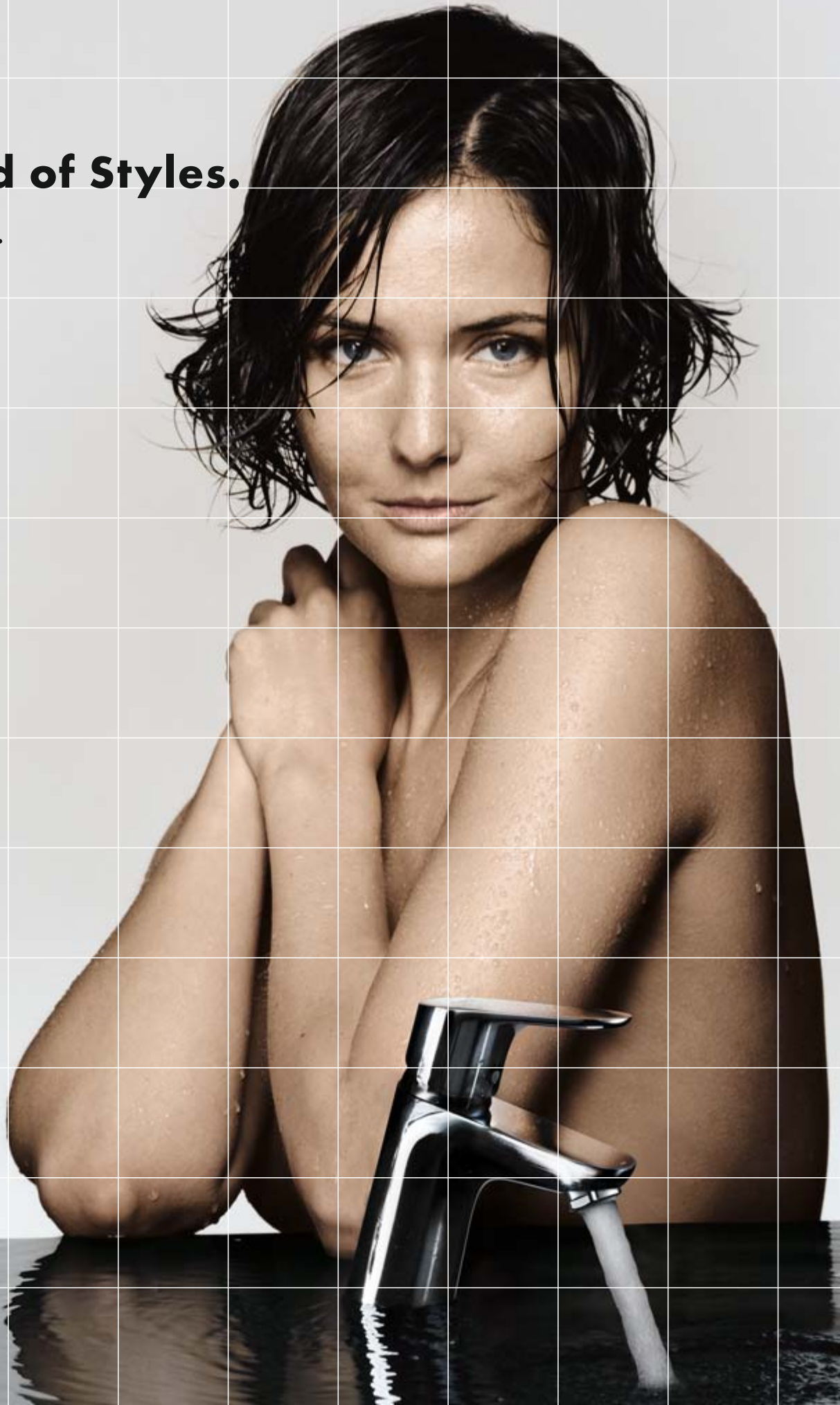


hansgrohe

World of Styles.

Focus[®].



World of Styles. We are all different, and we all have different tastes. Some desire an elegant, warm ambiance in their bathroom, others prefer a pure, minimalist style. But there is one thing we all have in common: we are happiest when the costs remain within our budget. This is the philosophy of Focus, the new, smart mixer lines.

Elegance

Experience harmony. You enjoy combining beautiful things to create a harmonious whole. The gentle curves, warm colours and exciting surfaces of your living environment reflect the diversity of your personality. Sensual, passionate with a touch of the dreamer.

Style

Space for yourself. You strive to eliminate clutter from your life. You love a free, unobstructed view, clearly defined lines and a puristic style. Your environment is minimalist: your key ingredients are cool colours, geometric shapes, lots of air and light. Free and open spaces allow your personality to unfold.



Focus® E²



Focus® E². Dynamic silhouette, ergonomic handle, flattering curves – the design of the new Focus E² mixers clearly reflects the ‘elegance’ philosophy. Exuding simplicity and exceptional quality, the Crometta 85 Vario/Unica‘Crometta set is a perfect match for the Focus E² bath and shower mixers.



Focus® E²
Single lever basin mixer



Focus® E²
Single lever bath mixer



Crometta® 85 Vario/
Unica® Crometta Set



Focus® E²
Single lever shower mixer

Focus® S



Focus® S. Cylinder, sphere and cone – these geometric shapes are the foundation of the Focus S mixer line. Its characteristic feature is the slim, straight pin handle which makes it a pleasure to operate. A shortened version is featured in the Crometta 85 Multi/Unica® Crometta set where it serves to adjust the shower height.



Focus® S
Single lever basin mixer



Focus® S
Single lever bath mixer



Focus® S
Single lever shower mixer



Crometta® 85 Multi/
Unica® Crometta Set

Confident in its design, modest in its price. With its Focus mixers and its Crometta 85 showers, Hansgrohe offers sophisticated brand products with proven quality and attractive designs. High volumes and an optimised production process make it possible to offer these features at a very attractive price. Ideal for installation in private bathrooms, these product lines are also perfect for use in the public and semi-public sectors, where not only price and

Boltic®. The patented lever lock prevents the loosening of the handle – even after years of use.

Hot water restriction. The right temperature can very easily be set in advance. No scalding!

Ceramic Cartridge. Top quality, smooth-running, durable and reliable. And it can be exchanged with the greatest of ease, as required. It is tested for water tightness and withstands water hammer of up to 60 bar.

Tested and certified. Hansgrohe faucets are accredited for both private households and for the public and semi-public sectors, and meet all current noise and flow specifications.



design play a major role, but also durability. The Focus basin mixers are equipped with Boltic lever lock, ceramic cartridge and the QuickClean function – proven technologies which have stood up to the test of time – while the new Crometta 85 Green hand shower with EcoSmart function shines with its low water use (only 6 litres per minute), providing abundant and sustainable shower fun.

hansgrohe
COMFORT
ZONE

ComfortZone. The generous space for outflowing water and the easy operation of the handle make it easy to set the perfect temperature. More comfort through space: mixer height and projection allow you to wash your hands comfortably, without the spout getting in the way.

hansgrohe
AIR
POWER

AIRPower. Soft, luxurious water jet by mixing with air.

hansgrohe
QUICK
CLEAN

QuickClean. Limescale has no chance against the anti-limescale function. If limescale does accumulate, it can easily be rubbed off.

hansgrohe
ECO
SMART

EcoSmart. With the compact, but clever Waterdimmer, you save not only water, but money.

Material: Basin mixer body made out of solid brass. Handle made from metal for comfortable touch and precise handling. The resistant surface is thanks to the new coating technology.



hansgrohe
QUICK
CLEAN

Steady performer. Limescale and deposits are simply rubbed off, which ensures that the products function perfectly and look good for years to come.

hansgrohe
ECO
SMART

The economic version. Crometta 85 is the most economic hand shower in the Crometta range. Thanks to its innovative spray technology, it is content to run on as little as 6 l of water per minute.

Focus® E²



Single lever basin mixer
31730, -000
Single lever basin mixer
Project (without pull rod)
31733, -000 (not shown)



Single lever bidet mixer
31920, -000
Single lever bidet mixer
with chain
31921, -000 (not shown)



Single lever bath mixer
for exposed fitting
31940, -000



Single lever shower mixer
for exposed fitting
31960, -000



Single lever bath mixer
for concealed installation
31945, -000
with safety combination
31946, -000



Single lever shower mixer
for concealed installation
31965, -000



Basic set iBox® universal
01800180



Crometta® 85 Vario/
Unica® Crometta® set with 1.60 m
hose Metaflex shower cover
90 cm # 27762, -000
65 cm # 27763, -000 (not shown)



Bath filler
13414, -000



Single lever kitchen mixer
31780, -000

Logis®



Lotion dispenser glass
40514, -000



Soap dish
40515, -000



Hook
40511, -000



Toilet brush holder
40522, -000

Focus® S



Single lever basin mixer
31701, -000
Single lever basin mixer
Project (without pull rod)
31711, -000 (not shown)



Single lever bidet mixer
31721, -000
Single lever bidet mixer
with chain
31726, -000 (not shown)



Single lever bath mixer
for exposed fitting
31742, -000



Single lever shower mixer
for exposed fitting
31762, -000



Single lever bath mixer
for concealed installation
31743, -000



Single lever shower mixer
for concealed installation
31763, -000



Basic set iBox® universal
01800180



Crometta® 85 Multi/
Unica®/Crometta® set with 1.60 m
hose Metaflex shower cover
90 cm # 27766, -000
65 cm # 27767, -000 (not shown)



Bath filler
13414, -000



Single lever kitchen mixer
31786, -000



Roll holder without cover
40526, -000



Spare roll holder
40517, -000



Towel holder
40512, -000



Bath towel holder 300 mm
40513, -000

Germany – Hansgrohe · P.O. Box 1145
D-77757 Schiltach · Tel. +49 7836 51-0 · Fax +49 7836 51-1300
info@hansgrohe.com · www.hansgrohe.com

Finland – Hansgrohe AG · Helsinki Branch Office · Kavallinmäki 15 · FIN-02750 Espoo
Tel. +358 (0) 207 931340 · Fax +358 (0) 207 931349
info@hansgrohe.fi · www.hansgrohe.com

Great Britain – Hansgrohe · Units D1 and D2 · Sandown Park · Trading Estate
Royal Mills · Esher · Surrey · KT10 8BL
Tel. +44 870 770 1972 · Fax +44 870 770 1973
info@hansgrohe.co.uk · www.hansgrohe.co.uk

Portugal – Hansgrohe · Rua Antoine de Saint Exupéry · Alapraia · 2765-043 Estoril
Tel. +351 21 4667110 · Fax +351 21 4667119
hansgrohe@jrb.pt · www.hansgrohe.com

Singapore – Hansgrohe Pte Ltd. · 69 Mohamed Sultan Road · Singapore 239015
Tel. +65 6884 5060 · Fax +65 6884 5070
info@hansgrohe.com.sg · www.hansgrohe.com.sg